

STATE OF UTAH STATE ROAD COMMISSION

FG-037-1(5)
S-0568(2)
DF-037-1(3)
F-037-1(4)

SECOND CONTR.
SEC. 1 & 2

INDEX TO SHEETS F-037-1(4) SEC. CONTR.

SHT. NO.	DESCRIPTION	DWG. NO.	STA.
1	TITLE SHEET		
2-2B	TYPICAL SECTION & MATERIALS SHEET		
3-1A	PLAN & PROFILE		
15-28	51.16' (C.B.L.) 55.49' (W.B.L.) 0-0 CONC. RIGID FR. O'PASS D-653		234+53.53 E.B.L. 235+03.13 W.B.L.
29	STD. HANDRAIL DETAILS	S-R-3-2	
30	CATCH BASIN	V-750	
31	2 WAY DIVERSION BOX	V-376-2	1+60
32	STD. GUARD RAIL & GUIDE POSTS	B-158	
33	MED. ISLAND CURB DETAIL	B-151	
34	STD. END SECTIONS	B-160	
35	STD. R/W FENCE	B-157	
36	CHAIN LINK FENCE	B-155	
37	DELINEATORS	B-154	
38-40	STD. HIGHWAY SIGNS	B-95-1, 2 & 3	
41-A	STD. F.A. & R/W MARKERS	M-45	
41-B	STD. FOR SUPER. CURVES	M-180	

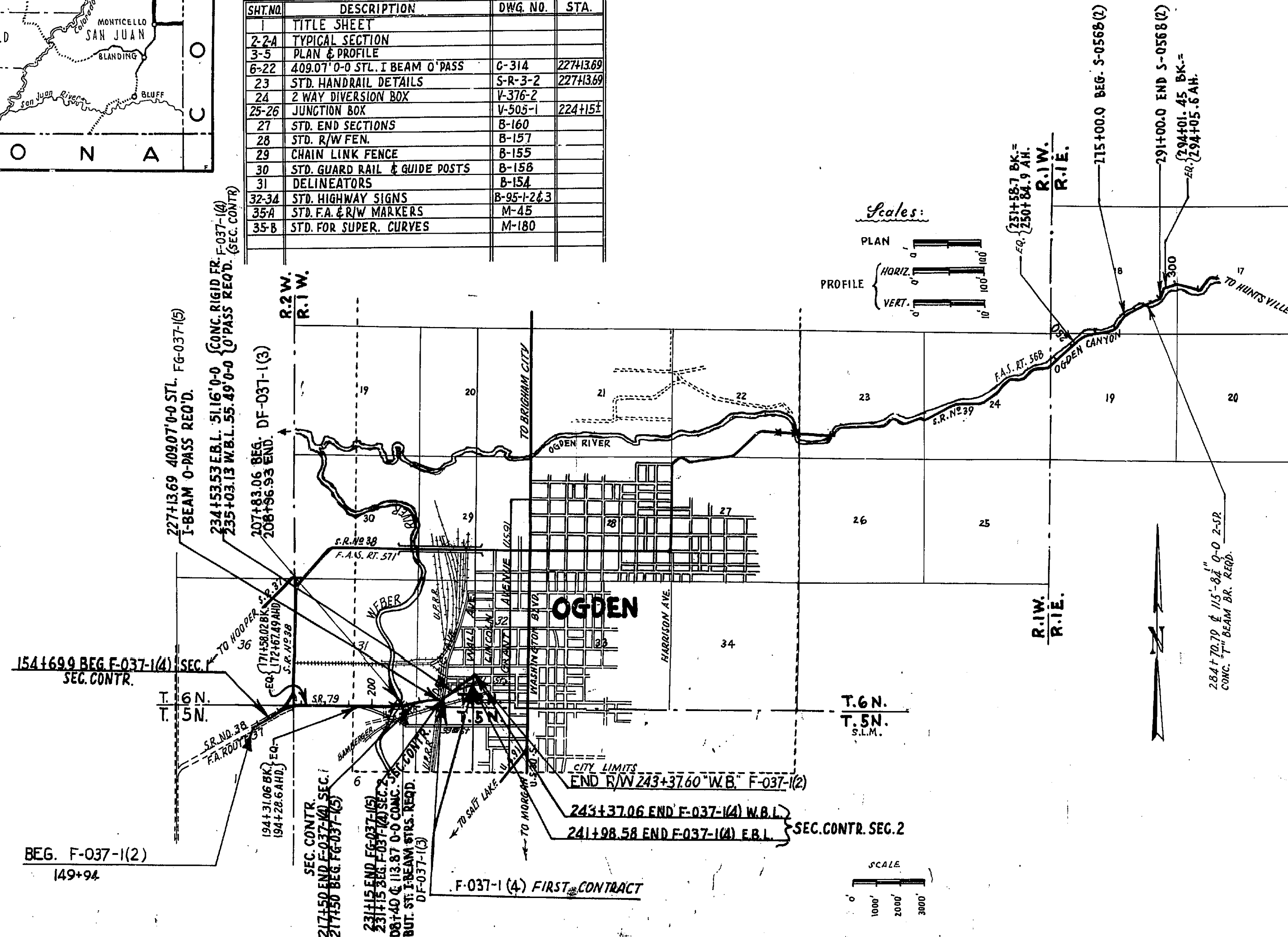
PLANS OF PROPOSED STATE ROAD FEDERAL AID PROJECT WEBER COUNTY

S-0568(2) ~ LENGTH 0.303 MILES
DF-037-1(3) LENGTH 0.022 MILE
F-037-1(4) FIRST CONTRACT
F-037-1(4) LENGTH 1.373 MILES
FG-037-1(5) LENGTH 0.259 MILES

SECOND CONTR.
SEC. 1 & 2

INDEX TO SHEETS FG-037-1(5)

SHT. NO.	DESCRIPTION	DWG. NO.	STA.
1	TITLE SHEET		
2-2A	TYPICAL SECTION		
3-5	PLAN & PROFILE		
6-22	409.07' 0-0 STL. I BEAM O'PASS	C-314	227+13.69
23	STD. HANDRAIL DETAILS	S-R-3-2	227+13.69
24	2 WAY DIVERSION BOX	V-376-2	
25-26	JUNCTION BOX	V-505-1	224+15.1
27	STD. END SECTIONS	B-160	
28	STD. R/W FEN.	B-157	
29	CHAIN LINK FENCE	B-155	
30	STD. GUARD RAIL & GUIDE POSTS	B-158	
31	DELINEATORS	B-154	
32-34	STD. HIGHWAY SIGNS	B-95-1, 2 & 3	
35A	STD. F.A. & R/W MARKERS	M-45	
35B	STD. FOR SUPER. CURVES	M-180	



FED. ROAD DIST. NO.	STATE	FED. AID PROJ. NO.	FISCAL YEAR	SHEET NO.	TOTAL SHEETS
UT.	UTAH	S-0568(2)	POSTWAR	1	
UT.	UTAH	DF-037-1(3)	POSTWAR	1	
UT.	UTAH	F-037-1(4)	POSTWAR	1	
UT.	UTAH	F-037-1(4)	POSTWAR	41	41
UT.	UTAH	FG-037-1(5)	POSTWAR	1	35

REVISED 8-20-64

INDEX TO SHEETS S-0568(2)

SHEET NO.	DESCRIPTION	DRAWING NO.	STATION
1	TITLE SHEET		
2	TYPICAL SECTION		
3	PLAN & PROFILE		
4-26	115'-8 1/2" 0-0 2-SP CONC. T BEAM BR	D-634	284+70.79
27	STD. HAND RAIL DETAILS	SR-3-2	284+70.79
28-30	RET. WALLS	V-722	
31-33	STD. HIGHWAY SIGNS	B-95-1, 2, 3	
34-A	" F.A. & R/W MARKERS	M-45	
34-B	" FOR SUPEREL. CURVES	M-180	

INDEX TO SHEETS DF-037-1(3)

SHEET NO.	DESCRIPTION	DRAWING NO.	STATION
1	TITLE SHEET		
2	PLAN & PROFILE		
3-15	115' 0-0 CONC. ABUT. ST. I BEAM STRS.	C-310	208+40
16	STD. HANDRAIL DETAILS	SR-3-2	208+40
17-19	" HIGHWAY SIGNS	B-95-1, 2, 3	

INDEX TO SHEETS F-037-1(4) FIRST CONTRACT

SHEET NO.	DESCRIPTION	DRAWING NO.	STATION
1	TITLE SHEET		
2	PLAN		

STATE ROAD COMMISSION OF UTAH
RECOMMENDED FOR APPROVAL: MAY 1959
R. J. Ballard
ASSISTANT DIRECTOR OF HIGHWAYS FOR ENGINEERING
APPROVED: MAY 1959
Edwin R. Morgan
DIRECTOR OF HIGHWAYS

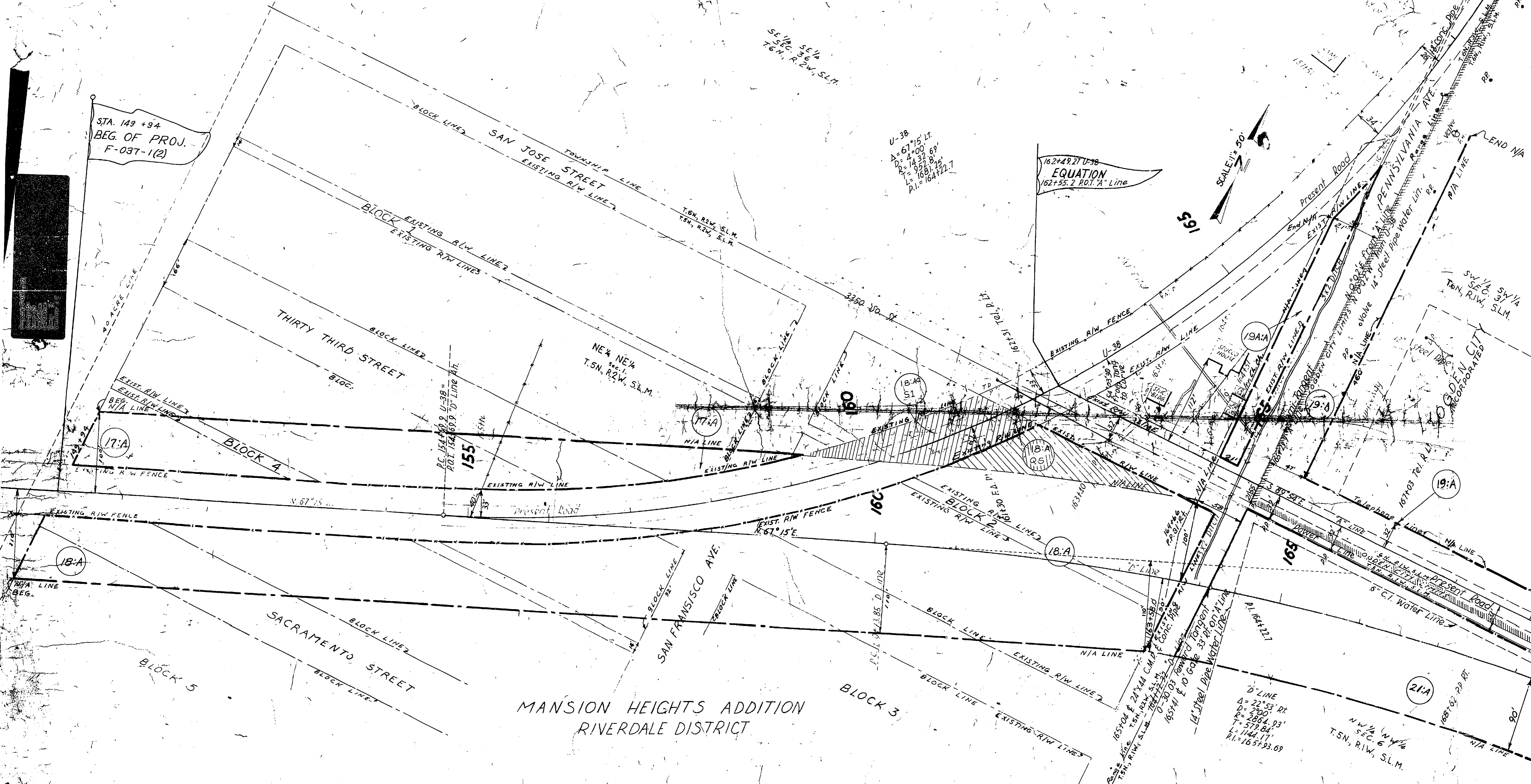
DEPARTMENT OF COMMERCE
BUREAU OF PUBLIC ROADS

APPROVED: _____
DIVISION ENGINEER DATE _____

NOTE: REVISED TO AGREE WITH DEEDS INCLUDING ACCESS OPENINGS NOV. 18 1964

PARCEL NO.	OWNER	NET AC.	PARCEL NO.	SOLD TO	NET AC.
17:A	M. STEWART MARRIOTT, ET AL	0.84±	18:AQS	OGDEN CITY	0.20±
18:A	OGDEN CITY	3.23±	18:AQS1		0.29±
19:A	MARQUART AIRCRAFT CORP.	0.03±			
19A:A	RUSSELL C. ANDERSON, ET AL.	0.18±			
21:A	OGDEN CITY	9.88±			

FID. ROAD STA. DIST. NO. UTAH DIST. NO. FISCAL YEAR PROJ. NO. SHEET NO. TOTAL SHEETS
REVISED 4-24-62



STA. 149 +94
BEG. OF PROJ.
F-037-1(2)

162+49.27 U-38
EQUATION
162+55.2 P.O.T. "A" Line

U-38
Δ = 67°15' Lt.
D = 4°00'
R = 1435.69'
L = 958.8'
PI = 1681.72'
PI = 16422.7

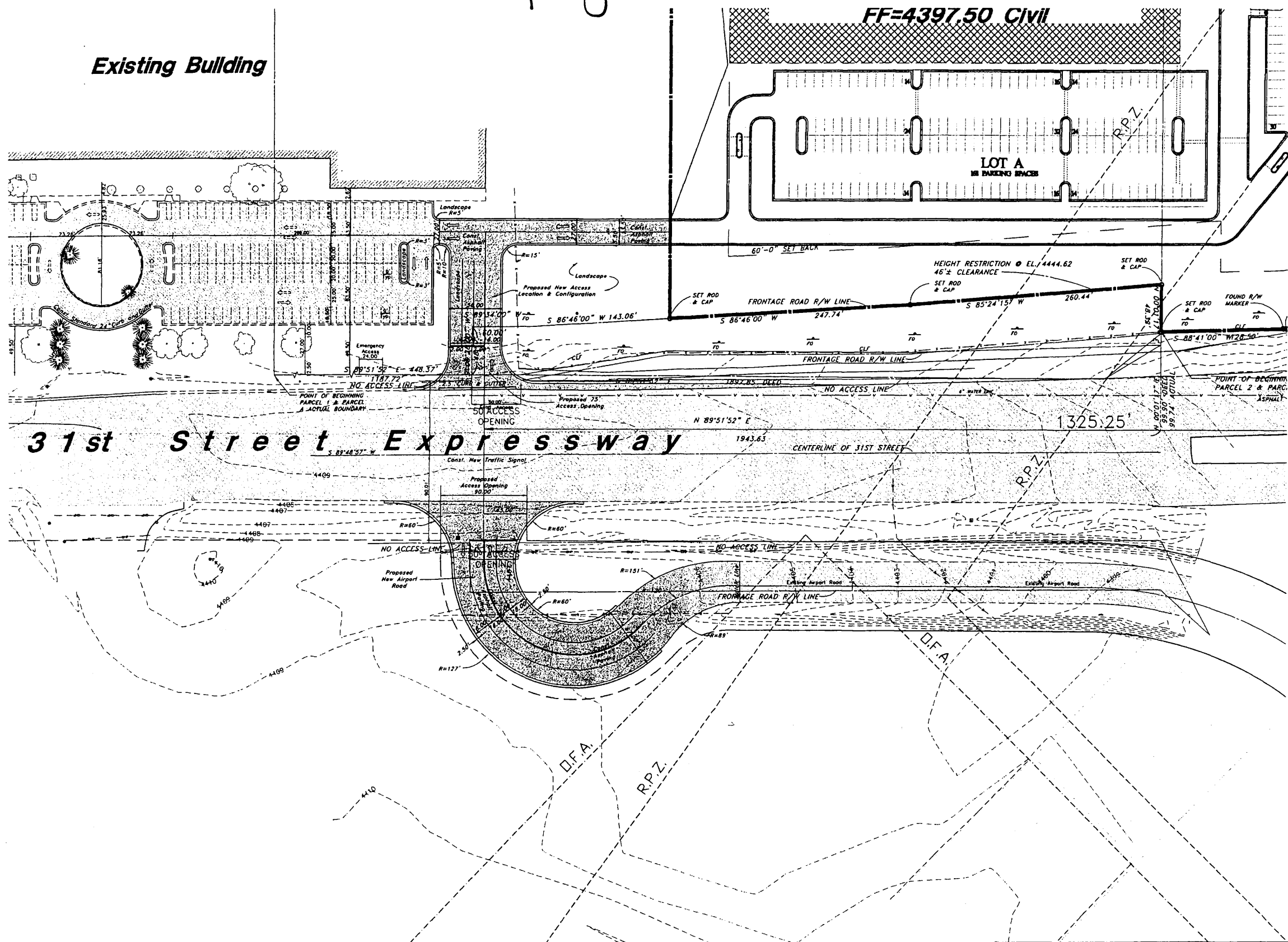


MANSION HEIGHTS ADDITION
RIVERDALE DISTRICT

D LINE
Δ = 27°53' Rt.
D = 200'
R = 2664.93'
T = 579.84'
L = 1144.17'
PI = 165793.69

N 1/4 NW 1/4
SEC. 6
T.5N., R.1W., S.L.M.

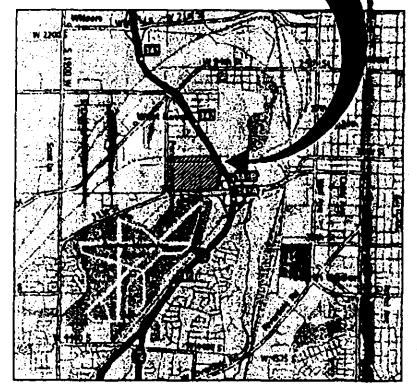
Exhibit "B"
Future Access opening Location



Scale: 1" = 50'



SITE LOCATION



Legend

- (Note: All items may not apply on drawing)
- San Sewer Manhole
 - Water Manhole
 - Storm Drain Manhole
 - Electrical Manhole
 - Catch Basins
 - Exst. Fire Hydrant
 - Fire Hydrant
 - Inst. Water Valve
 - Water Valve
 - Sanitary Sewer
 - Culinary Water
 - Gas Line
 - Irrigation Line
 - Storm Drain
 - Telephone Line
 - Secondary Waterline
 - Power Line
 - Fire Line
 - Land Drain
 - Power pole w/guy
 - Light Pole
 - Fence
 - Flashing of ditch
 - Overhead Power line
 - Corrugated Metal Pipe
 - Concrete Pipe
 - Reinforced Concrete Pipe
 - Ductile Iron
 - Paving Chloride
 - Top of Asphalt
 - Edge of Asphalt
 - Centerline
 - Flowline
 - Finish Floor
 - Top of Curb
 - Top of Wall
 - Top of Concrete
 - Natural Ground
 - Finish Contour
 - Exst. Contour
 - Finish Grade
 - Exst. Grade
 - Ridge Line
 - Direction of Flow
 - Existing Asphalt
 - New Asphalt
 - Heavy Duty Asphalt
 - Concrete
 - Open Face
 - Curb & Cutter

Reference Project F-037-1(2) Sheet 4 & I-15-8(6)334 Sheet 11B
Parcels: 19:AQ & 21:3AQ

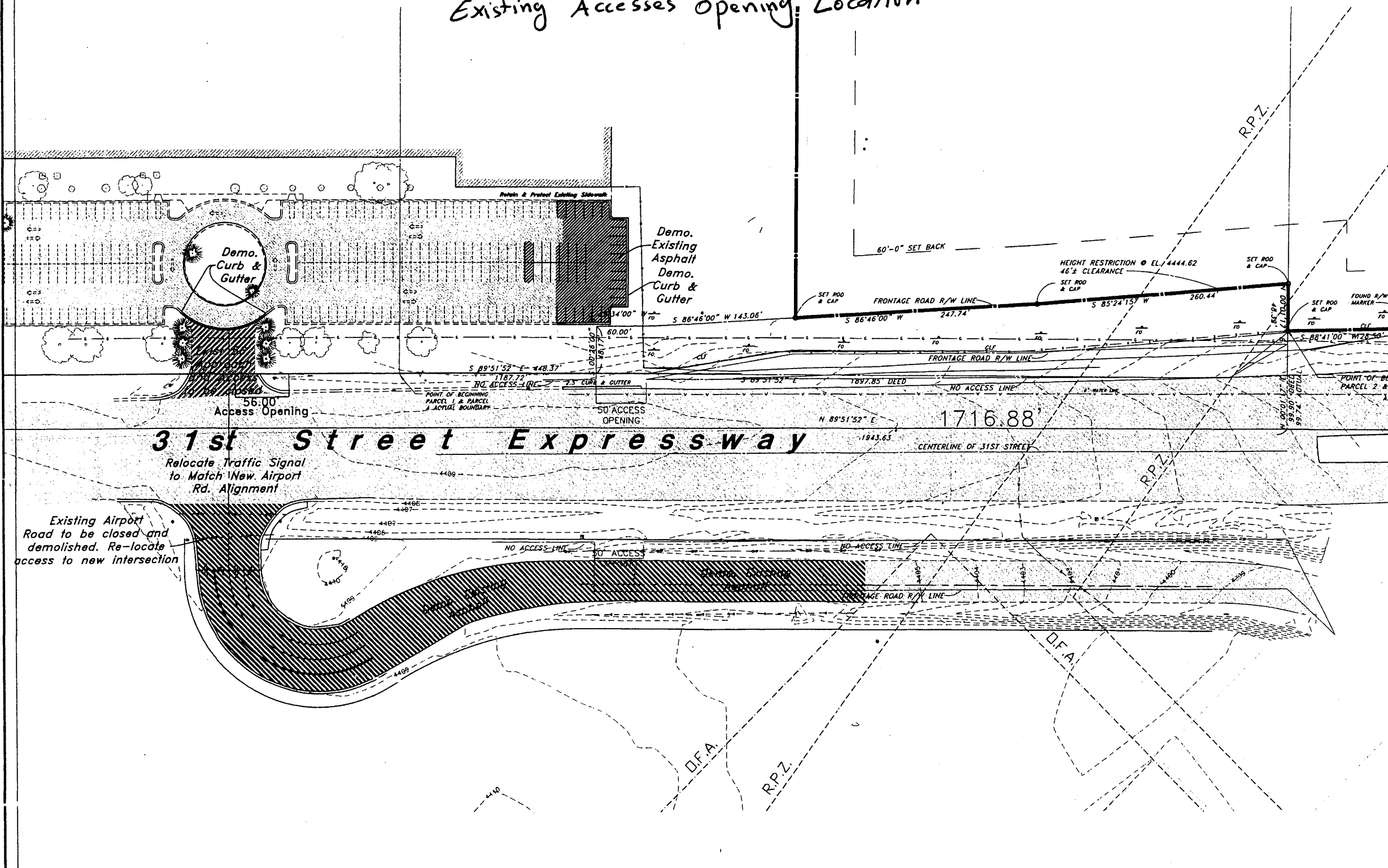
Hinkley Drive Access Plan		Auto4v-US Foods	
A Part of the Southern 1/2 of Section 3, T6N, R1W, SLB&M, US Survey Ogden City, Utah		DATE: 6 Dec, 2006	
GREAT BASIN ENGINEERING NORTH 5746 South 1475 East - Suite 200 Ogden, Utah 84403 P.O. Box 150046, Ogden, Utah 84415		SCALE: 1" = 50'	DRWG. NO.
DRAWN: CM		REVISIONS:	C1.2
07N20855		20 June, 2007	

Exhibit "A"

Existing Accesses Opening Location



SITE LOCATION



Legend

- (Note: A, B, C, D, E, F, G, H, I, J, K, L, M, N, O, P, Q, R, S, T, U, V, W, X, Y, Z, AA, AB, AC, AD, AE, AF, AG, AH, AI, AJ, AK, AL, AM, AN, AO, AP, AQ, AR, AS, AT, AU, AV, AW, AX, AY, AZ, BA, BB, BC, BD, BE, BF, BG, BH, BI, BJ, BK, BL, BM, BN, BO, BP, BQ, BR, BS, BT, BU, BV, BW, BX, BY, BZ, CA, CB, CC, CD, CE, CF, CG, CH, CI, CJ, CK, CL, CM, CN, CO, CP, CQ, CR, CS, CT, CU, CV, CW, CX, CY, CZ, DA, DB, DC, DD, DE, DF, DG, DH, DI, DJ, DK, DL, DM, DN, DO, DP, DQ, DR, DS, DT, DU, DV, DW, DX, DY, DZ, EA, EB, EC, ED, EE, EF, EG, EH, EI, EJ, EK, EL, EM, EN, EO, EP, EQ, ER, ES, ET, EU, EV, EW, EX, EY, EZ, FA, FB, FC, FD, FE, FF, FG, FH, FI, FJ, FK, FL, FM, FN, FO, FP, FQ, FR, FS, FT, FU, FV, FW, FX, FY, FZ, GA, GB, GC, GD, GE, GF, GG, GH, GI, GJ, GK, GL, GM, GN, GO, GP, GQ, GR, GS, GT, GU, GV, GW, GX, GY, GZ, HA, HB, HC, HD, HE, HF, HG, HH, HI, HJ, HK, HL, HM, HN, HO, HP, HQ, HR, HS, HT, HU, HV, HW, HX, HY, HZ, IA, IB, IC, ID, IE, IF, IG, IH, II, IJ, IK, IL, IM, IN, IO, IP, IQ, IR, IS, IT, IU, IV, IW, IX, IY, IZ, JA, JB, JC, JD, JE, JF, JG, JH, JI, JJ, JK, JL, JM, JN, JO, JP, JQ, JR, JS, JT, JU, JV, JW, JX, JY, JZ, KA, KB, KC, KD, KE, KF, KG, KH, KI, KJ, KK, KL, KM, KN, KO, KP, KQ, KR, KS, KT, KU, KV, KW, KX, KY, KZ, LA, LB, LC, LD, LE, LF, LG, LH, LI, LJ, LK, LL, LM, LN, LO, LP, LQ, LR, LS, LT, LU, LV, LW, LX, LY, LZ, MA, MB, MC, MD, ME, MF, MG, MH, MI, MJ, MK, ML, MM, MN, MO, MP, MQ, MR, MS, MT, MU, MV, MW, MX, MY, MZ, NA, NB, NC, ND, NE, NF, NG, NH, NI, NJ, NK, NL, NM, NN, NO, NP, NQ, NR, NS, NT, NU, NV, NW, NX, NY, NZ, OA, OB, OC, OD, OE, OF, OG, OH, OI, OJ, OK, OL, OM, ON, OO, OP, OQ, OR, OS, OT, OU, OV, OW, OX, OY, OZ, PA, PB, PC, PD, PE, PF, PG, PH, PI, PJ, PK, PL, PM, PN, PO, PP, PQ, PR, PS, PT, PU, PV, PW, PX, PY, PZ, QA, QB, QC, QD, QE, QF, QG, QH, QI, QJ, QK, QL, QM, QN, QO, QP, QQ, QR, QS, QT, QU, QV, QW, QX, QY, QZ, RA, RB, RC, RD, RE, RF, RG, RH, RI, RJ, RK, RL, RM, RN, RO, RP, RQ, RR, RS, RT, RU, RV, RW, RX, RY, RZ, SA, SB, SC, SD, SE, SF, SG, SH, SI, SJ, SK, SL, SM, SN, SO, SP, SQ, SR, SS, ST, SU, SV, SW, SX, SY, SZ, TA, TB, TC, TD, TE, TF, TG, TH, TI, TJ, TK, TL, TM, TN, TO, TP, TQ, TR, TS, TT, TU, TV, TW, TX, TY, TZ, UA, UB, UC, UD, UE, UF, UG, UH, UI, UJ, UK, UL, UM, UN, UO, UP, UQ, UR, US, UT, UY, UV, UW, UX, UY, UZ, VA, VB, VC, VD, VE, VF, VG, VH, VI, VJ, VK, VL, VM, VN, VO, VP, VQ, VR, VS, VT, VU, VV, VW, VX, VY, VZ, WA, WB, WC, WD, WE, WF, WG, WH, WI, WJ, WK, WL, WM, WN, WO, WP, WQ, WR, WS, WT, WU, WV, WW, WX, WY, WZ, XA, XB, XC, XD, XE, XF, XG, XH, XI, XJ, XK, XL, XM, XN, XO, XP, XQ, XR, XS, XT, XU, XV, XW, XX, XY, XZ, YA, YB, YC, YD, YE, YF, YG, YH, YI, YJ, YK, YL, YM, YN, YO, YP, YQ, YR, YS, YT, YU, YV, YW, YX, YY, YZ, ZA, ZB, ZC, ZD, ZE, ZF, ZG, ZH, ZI, ZJ, ZK, ZL, ZM, ZN, ZO, ZP, ZQ, ZR, ZS, ZT, ZU, ZV, ZW, ZX, ZY, ZZ)
- San. Sewer Manhole
 - Water Manhole
 - Storm Drain Manhole
 - Electrical Manhole
 - Catch Basin
 - Exst. Fire Hydrant
 - Fire Hydrant
 - Exst. Water Valve
 - Water Valve
 - Sanitary Sewer
 - Culinary Water
 - Gas Line
 - Irrigation Line
 - Storm Drain
 - Telephone Line
 - Secondary Waterline
 - Power Line
 - Fire Line
 - Lead Drain
 - Power pole
 - Power pole w/guy
 - Light Pole
 - Fence
 - Flowline of ditch
 - Overhead Power line
 - Corrugated Metal Pipe
 - Concrete Pipe
 - Reinforced Concrete Pipe
 - Ductile Iron
 - Polystyrene Chloride
 - Top of Asphalt
 - Edge of Asphalt
 - Centerline
 - Flowline
 - Finish Floor
 - Top of Curb
 - Top of Wall
 - Top of Walk
 - Top of Concrete
 - Natural Ground
 - Finish Contour
 - Exst. Contour
 - Finish Grade
 - Exst. Grade
 - Ridge Line
 - Direction of Flow
 - Existing Asphalt
 - New Asphalt
 - Heavy Duty Asphalt
 - Concrete
 - Open Face Curb & Gutter

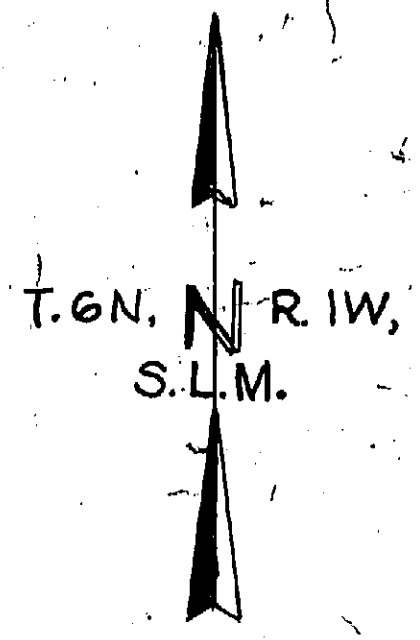
Reference Project F-037-1(2) Sheet 4 & I-15-8(6)334 Sheet 11B
 Parcels: 21:AQ

Exist Site Plan		Autoliv-US Foods A Part of the Southern 1/2 of Section 3, 16th, R1W, S16&M, US Survey Ogden City, Utah	
	GREAT BASIN ENGINEERING NORTH	SCALE: 1" = 50'	DATE: 6 Dec, 2006
	5746 South 1475 East - Suite 200 Ogden, Utah 84405 P.O. Box 150048, Ogden, Utah 84415 <small>Ogden (801)324-4818 Salt Lake City (801)321-0222 Fax (801)324-7044</small>	DRAWN: CM	REVISIONS: 20 June, 2007
		07N20855	DWG. NO. CO.2

NOTE: REVISED TO AGREE WITH DEEDS
INCLUDING ACCESS OPENINGS
NOV. 18, 1964

F-037-101
REVISED 5-19-64
REVISED 10-12-90

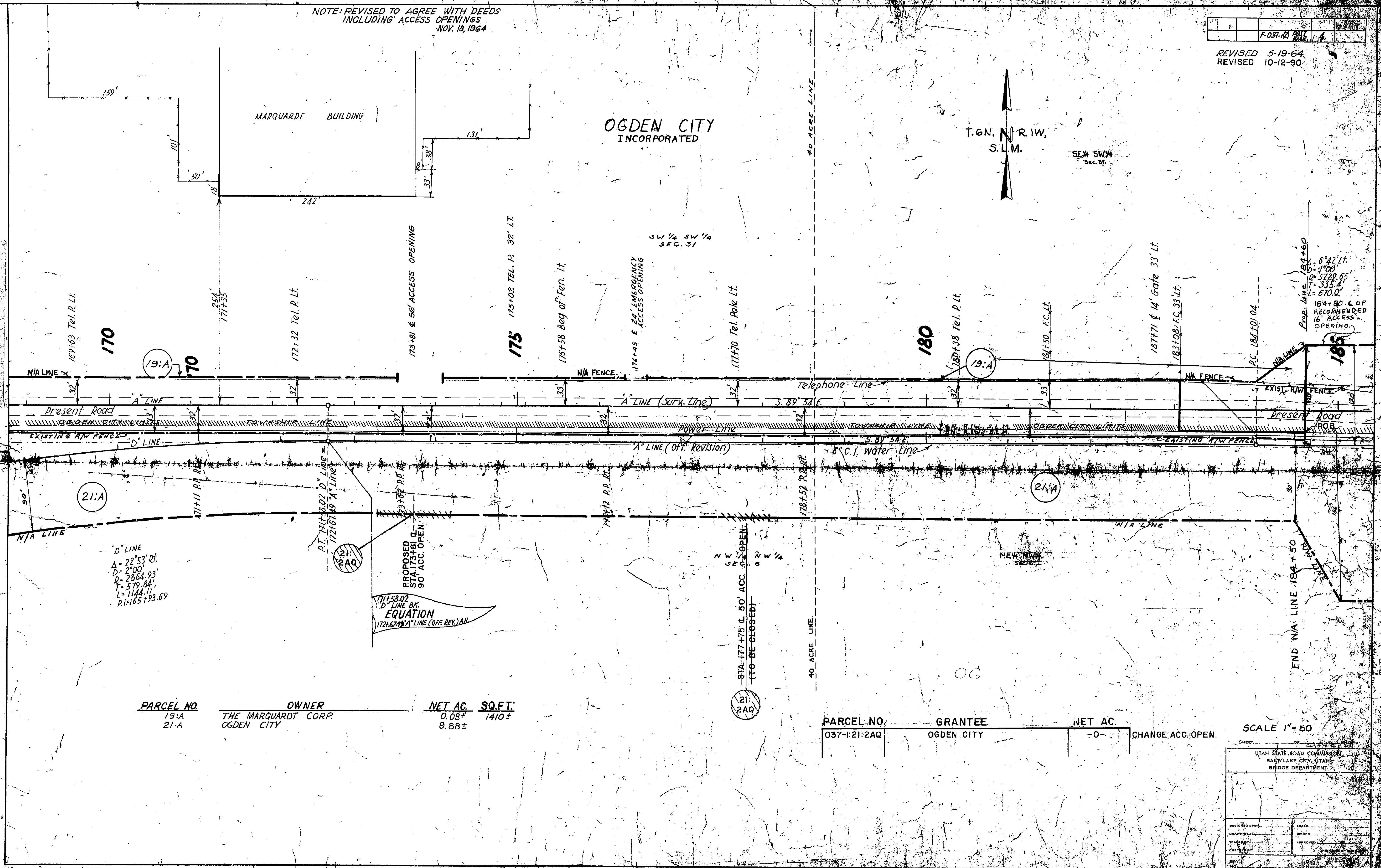
OGDEN CITY
INCORPORATED



SE 1/4 SW 1/4
Sec. 01.

SW 1/4 SW 1/4
SEC. 31

REVISION
Project: F-037-1 (2)
County: 037
Date: 10/12/90
Scale: 1"=50'
Sheet: 01



D LINE
A = 22°53' Rt.
D = 2°00'
D = 2864.93'
T = 579.84'
L = 1144.17'
P.I. = 165+193.69'

PROPOSED
STA. 173+81.0
90° ACC. OPEN.
EQUATION
171+58.02
D LINE BK.
172+67.19 A LINE (OFF. REV.) AN

STA. 177+75.0 50° ACC. OPEN.
(TO BE CLOSED)

PARCEL NO.	OWNER	NET AC.	SQ.FT.
19:A	THE MARQUARDT CORP.	0.08±	1410±
21:A	OGDEN CITY	9.88±	

PARCEL NO.	GRANTEE	NET AC.	CHANGE ACC. OPEN.
037-1:21:2AQ	OGDEN CITY	-0-	

SCALE 1" = 50'

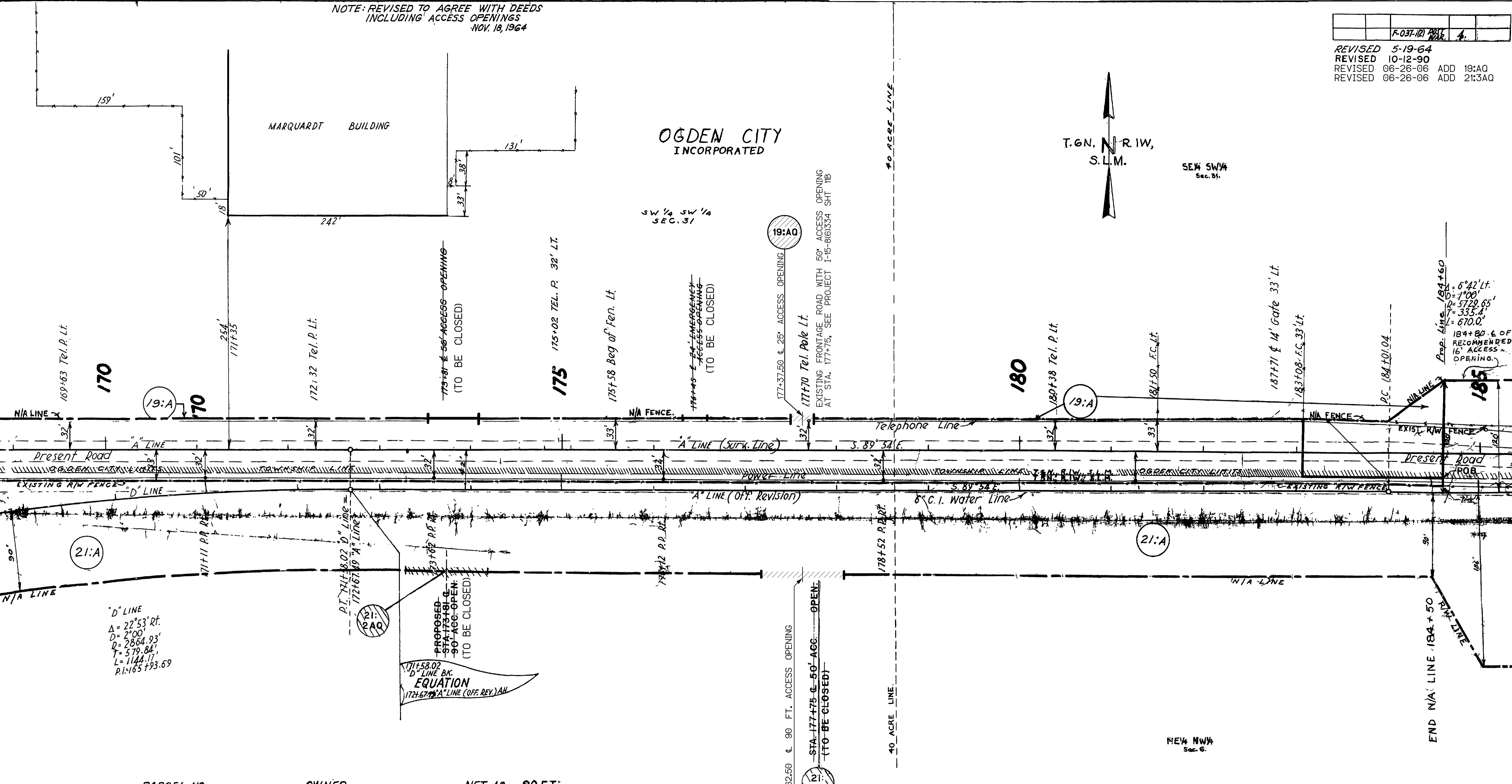
UTAH STATE ROAD COMMISSION
SALT LAKE CITY, UTAH
BRIDGE DEPARTMENT

DESIGNED BY	SCALE
DRAWN BY	ISSUED
CHECKED BY	APPROVED
BY	DATE

NOTE: REVISED TO AGREE WITH DEEDS INCLUDING ACCESS OPENINGS NOV. 18, 1964

F-037-121	PLAT	NO. 4
-----------	------	-------

REVISED 5-19-64
 REVISED 10-12-90
 REVISED 06-26-06 ADD 19:AO
 REVISED 06-26-06 ADD 21:3AQ



PARCEL NO.	OWNER	NET AC.	SQ.FT.
19:A	THE MARQUARDT CORP.	0.03±	1410±
21:A	OGDEN CITY	9.88±	

PARCEL NO.	GRANTEE	NET AC.	CHANGE ACC. OPEN.
037-1:21:2AQ	OGDEN CITY	-0-	CHANGE ACC. OPEN.
19:AO	AUTOLIV	-0-	CHANGE ACCESS
23:3AQ	OGDEN CITY	-0-	CHANGE ACCESS

SCALE 1" = 50'

UTAH STATE ROAD COMMISSION
 SALT LAKE CITY, UTAH
 BRIDGE DEPARTMENT

NW1/4 NW1/4
 SEC. 6

"D" LINE
 $\Delta = 22^{\circ}53' RT.$
 $D = 2^{\circ}00'$
 $R = 2864.93'$
 $T = 579.84'$
 $L = 1144.17'$
 $P.I. = 165^{\circ}49'33.69"$

PROPOSED
 STA. 171+58.02
 90' ACC. OPEN.
 (TO BE CLOSED)
 EQUATION
 172+67+99 "A" LINE (OFF. REV.) AH

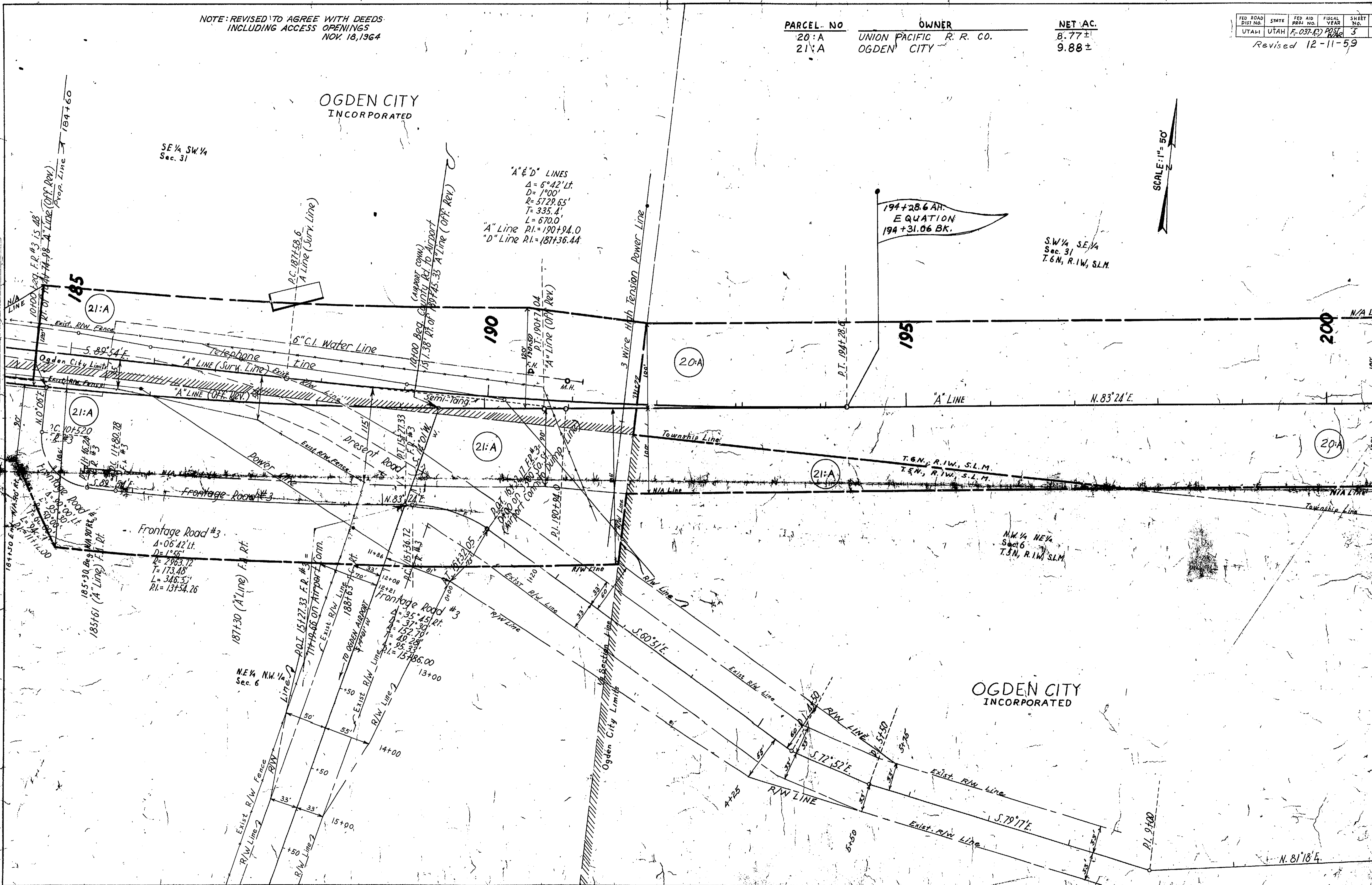
Prop. Lines 184+60
 $\Delta = 6^{\circ}42' Lt.$
 $D = 1^{\circ}00'$
 $R = 5729.65'$
 $T = 335.4'$
 $L = 670.0'$
 184+80 E. OF
 RECOMMENDED
 16' ACCESS
 OPENING.

NOTE: REVISED TO AGREE WITH DEEDS
INCLUDING ACCESS OPENINGS
NOV. 18, 1964

PARCEL NO	OWNER	NET AC.
20:A	UNION PACIFIC R. R. CO.	8.77±
21:A	OGDEN CITY	9.88±

FED ROAD DIST NO.	STATE	FED AID PROJ NO.	FISCAL YEAR	SHEET NO.	TOTAL SHEETS
UTAH	UTAH	F-037-12	POST ROAD	3	

Revised 12-11-59



OGDEN CITY
INCORPORATED

SE 1/4 SW 1/4
Sec. 31

"A" & "D" LINES
 $\Delta = 6^\circ 42' Lt.$
 $D = 1^\circ 00'$
 $R = 5729.65'$
 $T = 335.4'$
 $L = 670.0'$
 "A" Line P.I. = 190+94.0
 "D" Line P.I. = 187+36.44

194+28.6 AH.
EQUATION
194+31.06 BK.

SW 1/4 SE 1/4
Sec. 31
T.6N., R.1W., S.L.M.

SCALE: 1" = 50'

Frontage Road #3
 $\Delta = 06^\circ 12' Lt.$
 $D = 1^\circ 56'$
 $R = 2963.12'$
 $T = 173.48'$
 $L = 346.33'$
 P.I. = 137+54.26

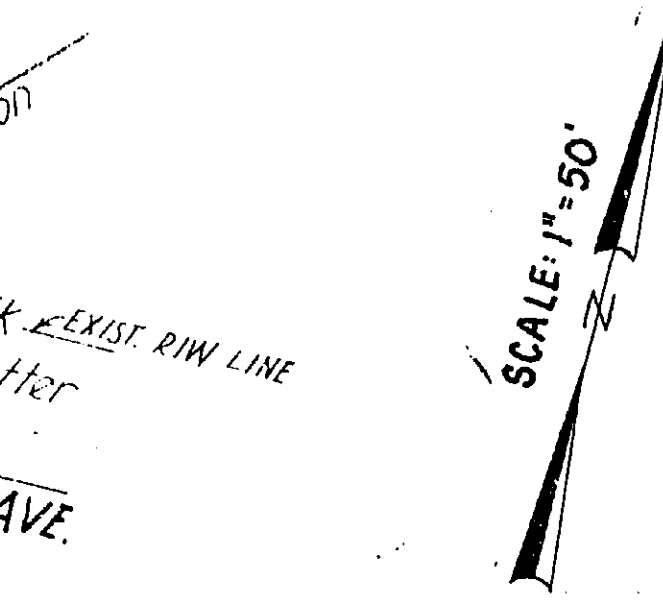
OGDEN CITY
INCORPORATED

N. 81° 18' E.

REVISED 9-1-65
 REVISED 11-1-78
 F-037-1(2) POST WAR 8
 REVISED 1-2-79
 REVISED 9-23-80
 REVISED 10-7-81
 REVISED 7-18-88

(SEC. CONTR.)
 SECTION 2

243+80.61 BK EQUATION
 244+15.81 Ab



NOTE: REVISED TO AGREE WITH DEEDS INCLUDING ACCESS OPENINGS NOV. 18, 1964

242+19.29 BK EQUATION
 242+26.4 Ab

241+98.58 END OF PROJ.
 NO. F-037-1(2)-E.B.I.
 SECTION 2 (SEC. CONTR.)

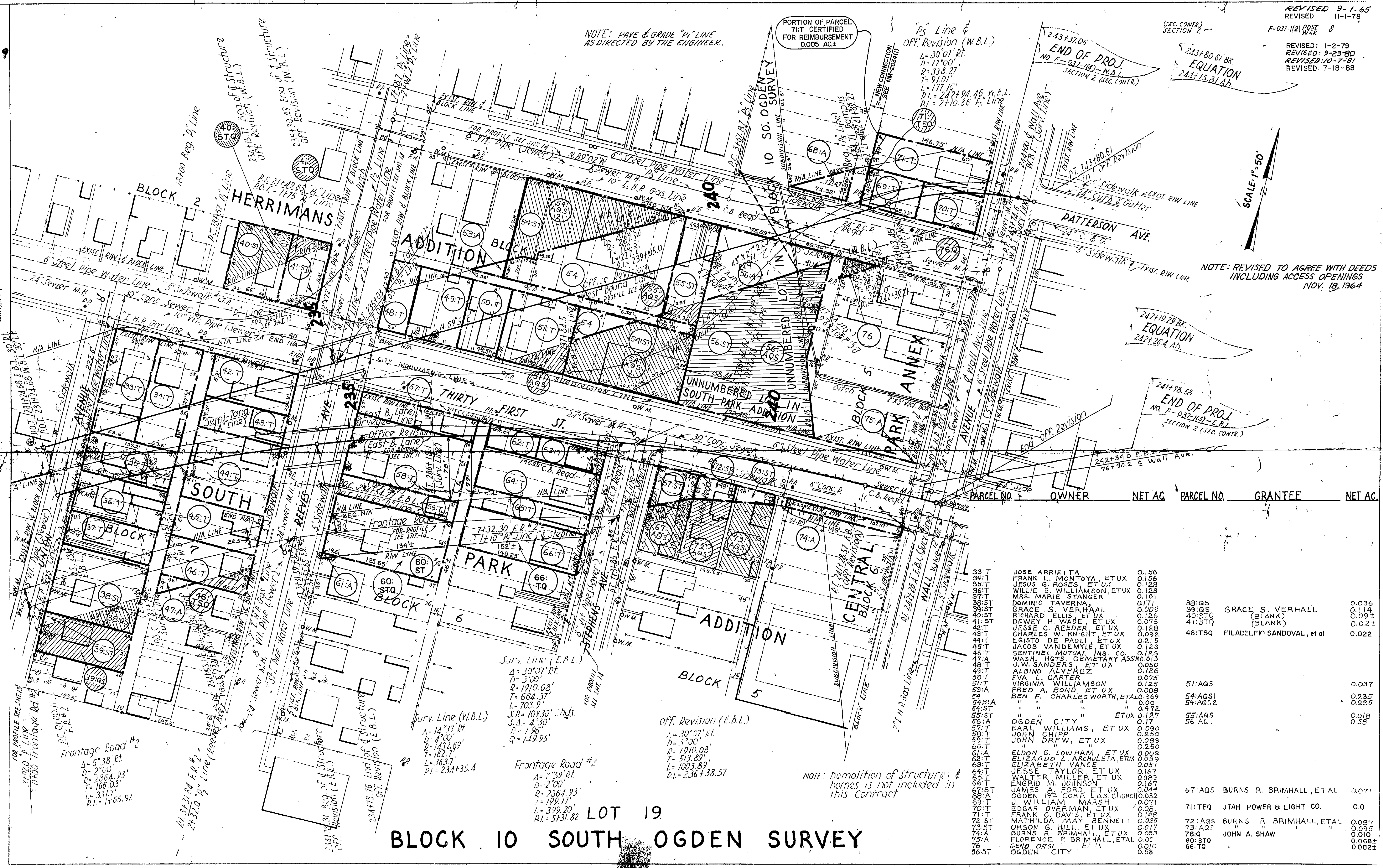
NOTE: PAVE & GRADE "P" LINE AS DIRECTED BY THE ENGINEER.

PORTION OF PARCEL 71:T CERTIFIED FOR REIMBURSEMENT 0.005 AC.

"P" Line & Off. Revision (W.B.L.)
 A = 30°01' RT
 D = 17°00'
 R = 338.27'
 T = 91.01'
 L = 177.16'
 P.I. = 242+94.46 W.B.L.
 P.I. = 2+10.85 "P" Line

Project: F-037-1(2)
 County: OGDEN
 Block: 10
 Sheet: 8 of 9

REVISIONS



PARCEL NO.	OWNER	NET AC	PARCEL NO.	GRANTEE	NET AC
33:T	JOSE ARRIETTA	0.156			
34:T	FRANK MONTROYA, ET UX	0.156			
35:T	JESUS G. ROSES, ET UX	0.123			
36:T	WILLIE E. WILLIAMSON, ET UX	0.123			
37:T	MRS. MARIE STANGER	0.101			
38:ST	DOMINIC TAVERNA	0.171	38:GS	GRACE S. VERHALL	0.036
39:ST	GRACE S. VERHALL	0.009	39:GS	(BLANK)	0.114
40:ST	RICHARD ELLIS, ET UX	0.126	40:STQ	(BLANK)	0.09±
41:ST	DEWEY H. WADE, ET UX	0.075	41:STQ	(BLANK)	0.02±
42:T	JESSE C. REEDER, ET UX	0.128			
43:T	CHARLES W. KNIGHT, ET UX	0.092	46:TSQ	FILADELFIN SANDOVAL, et al	0.022
44:T	EGISTO DE PAOLI, ET UX	0.215			
45:T	JACOB VAN DEN WYLE, ET UX	0.123			
46:T	SENTINEL MUTUAL INS. CO.	0.123			
47:A	WASH. HETS. CEMETARY ASS'N	0.013			
48:T	J.W. SANDERS, ET UX	0.050			
49:T	ALBINO ALVEREZ	0.126			
50:T	EVA L. CARTER	0.075			
51:T	VIRGINIA WILLIAMSON	0.125	51:AQ5		0.037
53:A	FRED A. BOND, ET UX	0.008			
54	BEN F. CHARLES WORTH, ETAL	0.369	54:AQ51		0.235
54:ST	" " " "	0.09	54:AQ2		0.235
55:ST	" " " "	0.472			
56:ST	" " " "	0.127	55:AQ5		0.018
57:T	OGDEN CITY	0.17	56:AC		0.58
58:T	EARL WILLIAMS, ET UX	0.090			
59:T	JOHN CHIPP	0.250			
60:T	JOHN DREW, ET UX	0.083			
61:A	" " " "	0.250			
62:T	ELDON G. LOWHAM, ET UX	0.002			
63:T	ELIZARDO L. ARCHULETA, ET UX	0.095			
64:T	ELIZABETH VANCE	0.051			
65:T	JESSE TAYLOR, ET UX	0.167			
66:T	WALTER MILLER, ET UX	0.083			
67:ST	EMERID M. JOHNSON	0.148	67:AQ5	BURNS R. BRIMHALL, ETAL	0.071
68:A	JAMES A. FORD, ET UX	0.044			
69:T	OGDEN 19th CORP. L.D.S. CHURCH	0.032			
70:T	J. WILLIAM MARSH	0.071			
71:T	EDGAR OVERMAN, ET UX	0.061	71:TEQ	UTAH POWER & LIGHT CO.	0.0
72:ST	FRANK C. DAVIS, ET UX	0.148			
73:ST	MATHILDA ARAY BENNETT	0.025	72:AQ5	BURNS R. BRIMHALL, ETAL	0.087
74:A	JAMES A. FORD, ET UX	0.044	73:AQ2	" " " "	0.095
75:A	ORSON G. HILL, ET UX	0.017	76:Q	JOHN A. SHAW	0.010
76	BURNS R. BRIMHALL, ET UX	0.033	60:STQ	" " " "	0.068±
	FLORENCE P. BRIMHALL, ETAL	0.00	66:TQ	" " " "	0.082±
	OGDEN CITY	0.58			

LOT 19
BLOCK 10 SOUTH OGDEN SURVEY

NOTE: Demolition of structures & homes is not included in this Contract.

Surv. Line (E.P.L.)
 A = 30°07' RT
 D = 3°00'
 R = 1910.08'
 T = 664.37'
 L = 703.9'
 S.P. = 10X30' chds.
 J.A. = 4°30'
 P.I. = 1.95'
 Q = 149.95'

Off. Revision (E.B.L.)
 A = 30°07' RT
 D = 3°00'
 R = 1910.08'
 T = 513.89'
 L = 1003.89'
 P.I. = 236+38.57

Surv. Line (W.B.L.)
 A = 14°33' RT
 D = 4°00'
 R = 1432.69'
 T = 182.7'
 L = 363.7'
 P.I. = 234+35.4

Frontage Road #2
 A = 7°59' RT
 D = 2°00'
 R = 2364.93'
 T = 199.17'
 L = 399.20'
 P.I. = 5+31.82

Frontage Road #2
 A = 6°38' RT
 D = 2°00'
 R = 2364.93'
 T = 166.03'
 L = 331.7'
 P.I. = 1+65.92